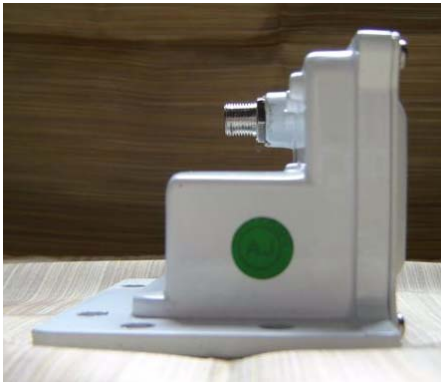
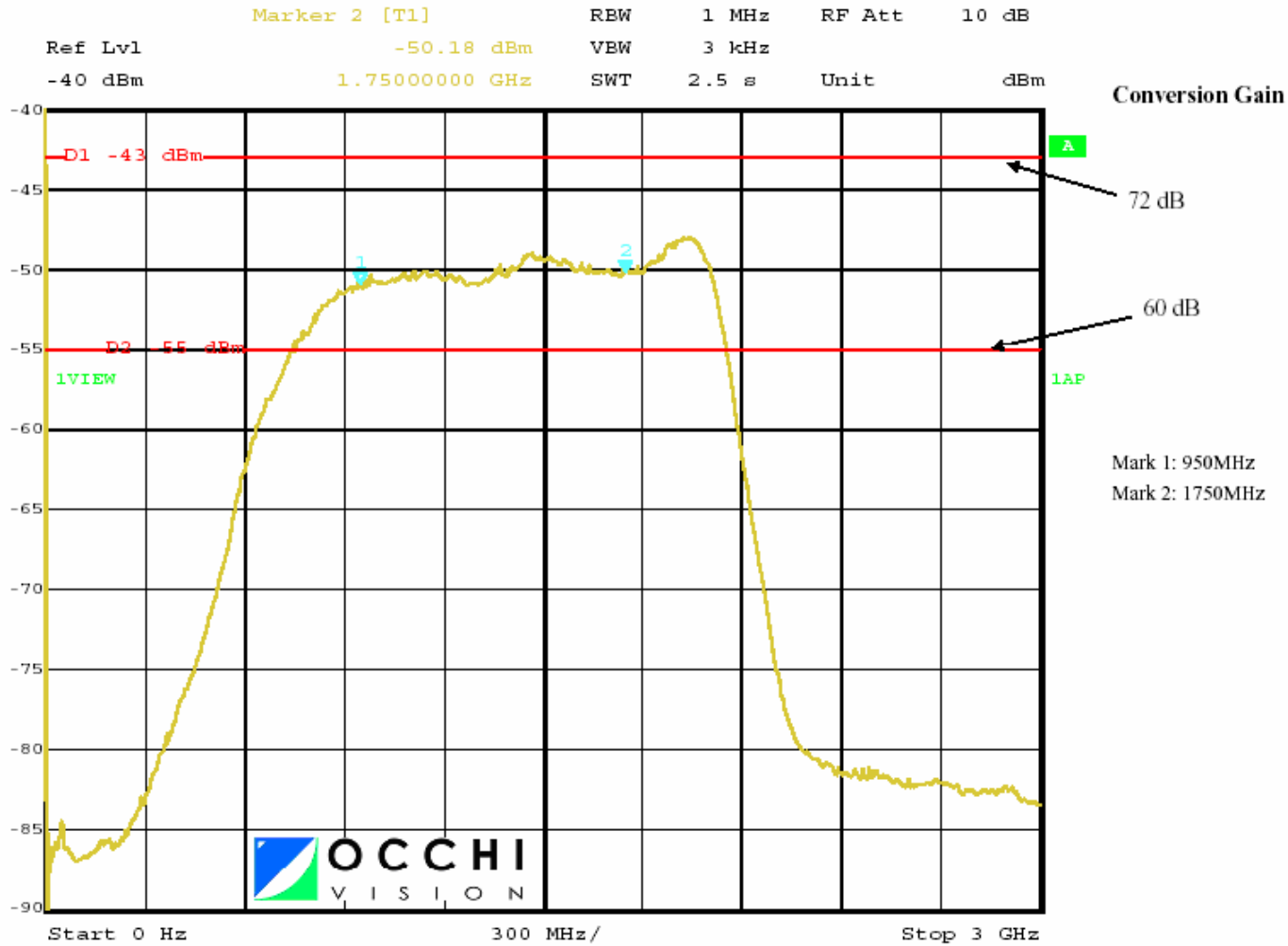


## C BAND PROFESSIONAL LNB EXTENDED Série C

Model:	C-17E
Input:	3.4 – 4.2 GHz
Output:	950 – 1750 MHz
Noise Temperature:	17° K
Gain:	65 dB Typical
Local Oscillator:	5150 MHz
Local Oscillator Stability:	+/- 500 KHz
D.C. Supply:	15 – 24 VDC
D.C. Current:	180 mA (Max)
Input Waveguide Flange:	CPR 229G
Output Connector:	Type "F" (female) – 75 ohms
Operating Temperature:	- 40 ~ 70° C
Weight:	210 g

### Mechanical Specs:





**C BAND PROFESSIONAL  
LNB EXTENDED  
Model C-17E  
Série C**

Input: 3.4 – 4.2 GHz  
Output: 950 – 1750 MHz  
Noise Temperature: 17° K  
Gain: 65 dB Typical  
Local Oscillator: 5150 MHz  
Local Oscillator Stability: +/- 500 KHz